

FIGURE 68. FAN SHUT OFF VALVE AND RELATED PARTS.

T/A212222

Current part is item (17,33) on diagram. Available at [www.oshkoshequipment.com](http://www.oshkoshequipment.com)

SECTION II		TM9-2320-270-34P			
(1)	(2)	(3)	(4)	(5)	(6)
ITEM NO.	SMR CODE	FSCM	PART NUMBER	DESCRIPTION AND USABLE ON CODE (UOC)	QTY
GROUP 0505 FAN ASSEMBLY					
FIG. 68 FAN SHUT OFF VALVE AND RELATED PARTS.					
1	MOZZ	45152	47334AX-14	HOSE, NONMETALLIC MAKE FROM HOSE, P/N 47334AX	2
2	PAZZ	45152	13345FX	NIPPLE, TUBE	4
3	PFOZZ	07295	100740	ADAPTER, STRAIGHT, PI	1
4	PAZZ	92392	0915648	ELBOW, PIPE TO TUBE	3
5	PAZZ	77873	2-947-544-22724	VALVE, RELIEF, PRESSURE CLUTCH	1
6	PAZZ	08441	A17004-2	TEE, PIPE	1
7	PAZZ	06853	213637	BUSHING, SLEEVE	1
8	PFOZZ	96906	MS20822-4	ELBOW, PIPE TO TUBE	1
9	PFOZZ	45152	66296AX35U	HOSE ASSEMBLY, NONMETALLIC	1
10	PFOZZ	96906	MS5150CA6	ADAPTER, STRAIGHT, PI	1
11	PFOZZ	45152	62289AX22U	HOSE ASSEMBLY, NONMETALLIC	1
12	PFOZZ	10988	49885	CLAMP, LOOP	1
13	PFOZZ	83179	236559	ADAPTER, STRAIGHT, PI	1
14	PFOZZ	96906	MS51500A6-2	ADAPTER, STRAIGHT, PI	1
15	PFOZZ	84971	TA720-S8	CLAMP, LOOP	1
16	PAZZ	78500	S-268-1	BOLT, MACHINE HEAD	1
17	PAZZ	06853	278614	VALVE, SHUTTLE	1

END OF FIGURE



Current part is item (17,33) on diagram. Available at [www.oshkoshequipment.com](http://www.oshkoshequipment.com)

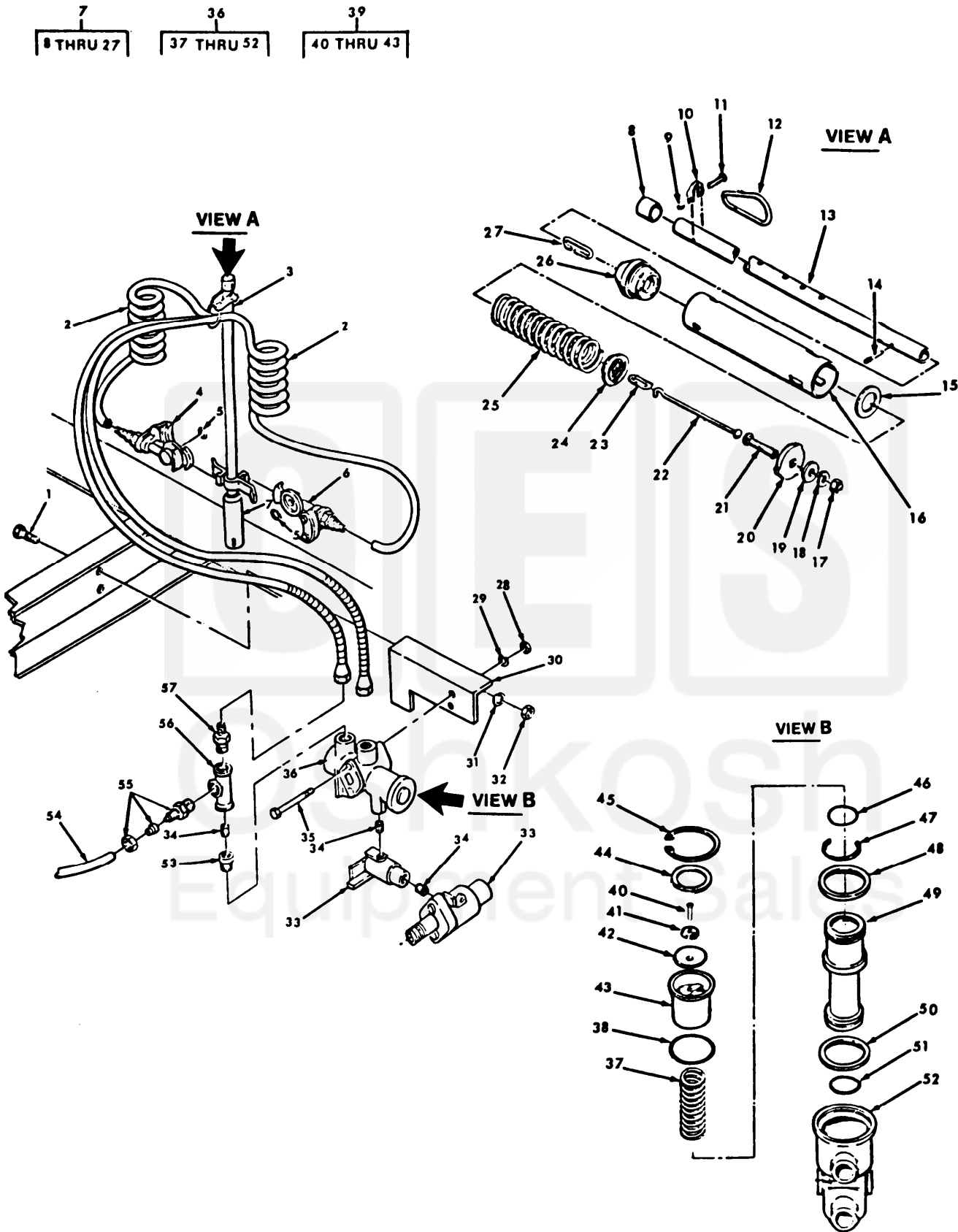


FIGURE 203. TRAILER HOSE ASSEMBLY.

SECTION II (1)	(2)	(3)	TM9-2320-270-34P (4)	(5)	(6)
ITEM NO.	SMR CODE	FSCM	PART NUMBER	DESCRIPTION AND USABLE ON CODE (UOC)	QTY
GROUP 1211 TRAILER BRAKE CONNECTIONS AND CONTROLS					
FIG. 203 TRAILER HOSE ASSEMBLY.					
1	PAOZZ	45152	1772HX1	SCREW,CAP,HEXAGON H	2
2	PAOZZ	87373	731522	HOSE SET,NONMETALLI TRAILER	2
3	PFOZZ	45152	11952FX	HOLDER	1
4	PAOZZ	73265	278852	COUPLING HALF,QUICK SERVICE	1
5	PAOZZ	06853	213630	PACKING,PREFORMED (FOR GLADHAND)	2
6	PAOZZ	98343	10451-E	COUPLING HALF,QUICK	1
7	PFOOO	52762	27200	HOSE TENNA ASSEMBLY	1
8	PAOZZ	52762	65-94736	CAP,TUBE	1
9	PAOZZ	88044	AN365-1024A	NUT,SELF-LOCKING,HE	1
10	PAOZZ	52762	65-94737	STRAP,RETAINING	1
11	PAOZZ	96906	MS35206-268	SCREW,MACHINE	1
12	PAOZZ	52762	65-94738	LINK,CHAIN,END	1
13	PAOZZ	52762	94747	TUBE,HOSE SUPPORT,T	1
14	PAOZZ	52762	65-94746	PIN,STRAIGHT,KNURLE	1
15	XAOZZ	52762	65-94755	WASHER,FLAT	1
16	XAOZZ	52762	65-94740	BASE TUBE,HOSE	1
17	PAOZZ	96906	MS51967-11	NUT,PLAIN,HEXAGON	1
18	PAOZZ	96906	MS35338-47	WASHER,LOCK	1
19	PAOZZ	96906	MS27183-15	WASHER,FLAT	1
20	XAOZZ	52762	65-94741	PLATE,MOUNTING,HOSE	1
21	XAOZZ	96906	MS35751-102	BOLT,SQUARE NECK	1
22	XAOZZ	52762	65-94742	BOLT BLANK	1
23	XAOZZ	52762	65-94745	LINK	1
24	XAOZZ	52762	65-94756	WASHER,SPRING COMP	1
25	XAOZZ	52762	65-94739	SPRING,HELICAL,COMP	1
26	PAOZZ	52762	65-94743	DEFLECTOR,DIRT AND	2
27	PAOZZ	52762	65-94744	LINK,CHAIN,END	1
28	PAOZZ	06853	244095	NUT,PLAIN,HEXAGON	2
29	PAOZZ	96906	MS35338-45	WASHER,LOCK	2
30	XDOZZ	45152	66016DX	BRACKET,TRAILER CONNECTOR	1
31	PAOZZ	96906	MS35338-48	WASHER,LOCK	2
32	PAOZZ	45152	1768HX1	NUT,PLAIN,HEXAGON	2
33	PAOZZ	06853	278614	VALVE,SHUTTLE	1
34	PAOZZ	45152	33287AX	NIPPLE,PIPE	4
35	PAOZZ	24617	9423808	SCREW,CAP,HEXAGON H	2
36	PAOFF	06853	279000	VALVE,AIR TRACTOR PROTECTION	1
37	KFFZZ	06853	248067	SPRING,HELICAL,COMP PART OF KIT P/N 280858	1
38	KFFZZ	06853	242775	PACKING,PREFORMED PART OF KIT P/N 280858	1
39	PAFFF	06853	283826	SEAT ASSEMBLY,VALVE	1
40	XAFZZ	06853	242109	SCREW,TAPPING,THREA	1
41	XAFZZ	06853	237908	WASHER,BRAKE DIAPHR	1
42	KFFZZ	06853	239615	DIAPHRAGM,VALVE,SPE PART OF KIT P/N 283826	1
43	XAFZZ	06853	248066	SEAT,VALVE	1
44	PFFZZ	06853	247130	WASHER,FLAT	1